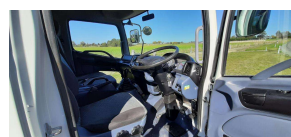
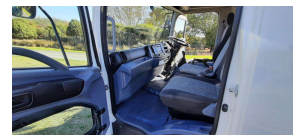


# 2005 Hino Ranger Tipper



## VEHICLE INFORMATION

### Cash Price

Includes GST,  
Registration &  
Licensing

**\$45,000**

Finance this vehicle  
from only

**\$349.71**

per week\*

Total Amount Payable

**\$54,554.97**



### Body

2 door, Truck - Tip Truck

### Odometer

119,155 km

### Engine

6400 cc

### Fuel Type

Diesel Turbo

### Transmission

6 Speed Manual

### Wheels

17.5" All Round

### VIN

7AT08400X21010334

### Wheelbase

2,900 mm

### Deck Length

3.4 m

### Deck Width

2.1 m

### Tare

3,930 kg

### GVM

7,995 kg

### Ext Colour

White

### Stock ID

1851



Gain peace of mind  
with Mechanical  
Breakdown Insurance.  
Ask us how.

### Exterior Features

- » Electric Mirror (Left)
- » Tilt Cab
- » Tipper

### Interior Features

- » 3 Seater
- » Adjustable Steering Wheel
- » Air Conditioning
- » power windows

### Mechanical Features

- » ABS
- » double rear wheels
- » Exhaust brake
- » Power Steering
- » Tipper

**GRAEME RICHARDT  
MOTORS** LMVD

Graeme Richardt Motors, Phone 03 688 1582, Email [trucksrus@orcon.net.nz](mailto:trucksrus@orcon.net.nz)  
56 Timaru-Pareora Highway, Timaru 7971, New Zealand  
[www.trucksrus.co.nz](http://www.trucksrus.co.nz)

\* Finance calculation based on a 36 month term, no deposit and with an example annual fixed interest rate of 11.99%. Actual interest rate may be higher or lower. Includes an establishment fee of \$376.00 and a monthly maintenance fee of \$8.50. Full term total amount payable of \$54,554.97. Estimate only, not an offer of finance. Terms, conditions and lending criteria apply.