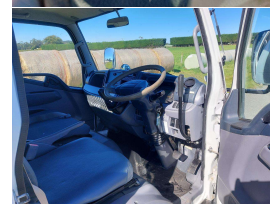
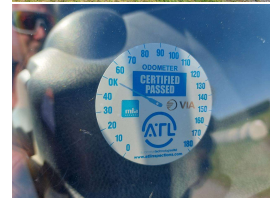


2011 Mitsubishi Canter Tipper



VEHICLE INFORMATION

Cash Price

Includes GST,
Registration &
Licensing

\$35,000

Finance this vehicle
from only

\$273.07

per week*

Total Amount Payable

\$42,599.54



Body

Truck - Tip Truck

Odometer

125,985 km

Engine

3000 cc

Fuel Type

Diesel Turbo

Transmission

5 Speed Manual

Wheels

17" All round

VIN

-

Stock ID

2076

Wheelbase

2,500 mm

Deck Length

3.05 m

Deck Width

1.6 m

Deck Height

0.34 m

Tare

2,830 kg

GVM

5,995 kg

Ext Colour

White



Gain peace of mind
with Mechanical
Breakdown Insurance.
Ask us how.

Exterior Features

- » 3 Drop Sides
- » 3 Ton Tipper
- » Car Licence
- » Tilt Cab
- » Tipper

Interior Features

- » 3 Seater
- » Adjustable Steering Wheel
- » Air Bag
- » Air Conditioning
- » Central-Locking
- » power windows

Mechanical Features

- » 5 Speed
- » ABS
- » double rear wheels
- » Exhaust brake
- » New Injectors
- » Power Steering
- » Tipper
- » Tubeless rims & tyres

**GRAEME RICHARDT
MOTORS** LMVD

Graeme Richardt Motors, Phone 03 688 1582, Email trucksrus@orcon.net.nz
56 Timaru-Pareora Highway, Timaru 7971, New Zealand
www.trucksrus.co.nz

* Finance calculation based on a 36 month term, no deposit and with an example annual fixed interest rate of 11.99%. Actual interest rate may be higher or lower. Includes an establishment fee of \$376.00 and a monthly maintenance fee of \$8.50. Full term total amount payable of \$42,599.54. Estimate only, not an offer of finance. Terms, conditions and lending criteria apply.