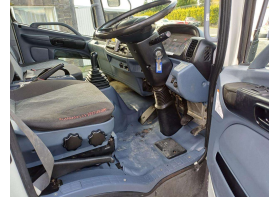


2006 Hino Ranger Tipper



VEHICLE INFORMATION

Cash Price

Includes GST,
Registration &
Licensing

\$37,000

Finance this vehicle
from only

\$288.40

per week*

Total Amount Payable

\$44,990.62



Gain peace of mind
with Mechanical
Breakdown Insurance.
Ask us how.

Body

Truck - Tip Truck

Odometer

157,451 km

Engine

4720 cc

Fuel Type

-

Transmission

6 Speed Manual

Wheels

17.5" All Round

VIN

7AT08400X21011213

Stock ID

2147

Wheelbase

2,900 mm

Deck Length

3.4 m

Deck Width

2.05 m

Deck Height

0.37 m

Tare

3,930 kg

GVM

7,995 kg

Ext Colour

White

Exterior Features

- » Tilt Cab
- » Tipper

Interior Features

- » 3 Seater
- » Adjustable Steering Wheel
- » Air Bag
- » power windows
- » Radio

Mechanical Features

- » ABS
- » double rear wheels
- » Exhaust brake
- » GCM 12000kg
- » Power Steering
- » Tubeless rims & tyres

**GRAEME RICHARDT
MOTORS**
LMVD

Graeme Richardt Motors, Phone 03 688 1582, Email trucksrus@orcon.net.nz
56 Timaru-Pareora Highway, Timaru 7971, New Zealand
www.trucksrus.co.nz

* Finance calculation based on a 36 month term, no deposit and with an example annual fixed interest rate of 11.99%. Actual interest rate may be higher or lower. Includes an establishment fee of \$376.00 and a monthly maintenance fee of \$8.50. Full term total amount payable of \$44,990.62. Estimate only, not an offer of finance. Terms, conditions and lending criteria apply.