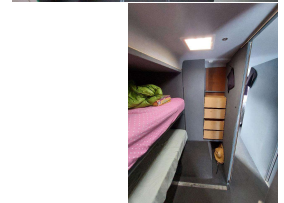


# 1990 Isuzu LV



## VEHICLE INFORMATION

### Cash Price

Includes GST,  
Registration &  
Licensing

**\$80,000**

Finance this vehicle  
from only

**\$617.94**

per week\*

Total Amount Payable

**\$96,398.98**



Gain peace of mind  
with Mechanical  
Breakdown Insurance.  
Ask us how.

### Body

House Bus

### Odometer

125,000 km

### Engine

11781 cc

### Fuel Type

Diesel

### Transmission

5 Speed Manual

### Wheels

-

### VIN

7A897260906000083

### Stock ID

1308

### Wheelbase

4,590 mm

### Deck Length

10 m

### Deck Width

2.4 m

### Deck Height

2 m

### Tare

9,890 kg

### GVM

13,905 kg

### Ext Colour

Grey

## Exterior Features

## Interior Features

» 7 Seater

## Mechanical Features

» double rear wheels  
» Exhaust brake  
» Tow-Bar

**GRAEME RICHARDT  
MOTORS** LMVD

Graeme Richardt Motors, Phone 03 688 1582, Email [trucksrus@orcon.net.nz](mailto:trucksrus@orcon.net.nz)  
56 Timaru-Pareora Highway, Timaru 7971, New Zealand  
[www.trucksrus.co.nz](http://www.trucksrus.co.nz)

\* Finance calculation based on a 36 month term, no deposit and with an example annual fixed interest rate of 11.99%. Actual interest rate may be higher or lower. Includes an establishment fee of \$376.00 and a monthly maintenance fee of \$8.50. Full term total amount payable of \$96,398.98. Estimate only, not an offer of finance. Terms, conditions and lending criteria apply.